



## DIN PC-333x Series

## User's Guide



## Copyright

The information in this manual is subject to change without notice for continuous improvement in the product. All rights are reserved. The manufacturer assumes no responsibility for any inaccuracies that may contain in this document, and makes no commitment to update or to keep current information contain in this manual.

No part of this manual may be reproduced, copied, translated or transmitted, in whole or in part, in any form or by any means without the prior written permission of DMP Electronics Inc.

©Copyright 2018 DMP Electronics Inc.

## Special Notice to Users

DMP Electronics Inc. provides no warranty with regard to this manual, the software, or other information contained herein and hereby expressly disclaims any implied warranties of merchantability or fitness for any particular purpose with regard to this manual, the software, or such other information. In no event shall DMP Electronics be liable for any incidental, consequential, or special damages, whether based on tort, contract, or otherwise, arising out of or in connection with this manual, the software, or other information contained herein or the use thereof.

DMP Electronics reserves the right to make any modification to this manual or the information contained herein at any time without notice. The software described herein is governed by the terms of a separated user license agreement or label sticker.

This product contains software owned by DM&P and licensed by third parties. Use of such software is subject to the terms and conditions of license agreements enclosed with this product. Software specifications are subject to change without notice and may not necessarily be identical to current retail versions.

Updates and additions to software may require an additional charge. Subscription to online service providers may require a fee and credit card information. Financial services may require prior arrangements with participating financial institution.

## Trademarks Acknowledgment

**DMP**<sup>®</sup> is the registered trademarks of DMP Electronics Inc.

Other brand names, product names or trade names appearing in this document are the properties and registered trademarks of their respective owners. All names mentioned herewith are served for identification purpose only.

# Safety Information

## WARNING

- Do not expose the DIN PC to rain or moisture, in order to prevent shock and fire hazard.
- Never install the DIN PC in wet locations.
- Do not open the cabinet to avoid electrical shock. Refer to your nearest dealer for qualified personnel servicing.
- Never touch un-insulated terminals or wire unless power of the DIN PC and display monitor are disconnected.
- Locate the DIN PC as close as possible to the socket outline for easy access and to avoid force caused by entangling of your arms with surrounding cables from the DIN PC.
- When using the DIN PC, avoid using or installing the modem to the serial port during a storm or a lightning.
- Do not use the modem or a telephone to report a gas leak in the vicinity of the leak.
- USB connectors are supplied with Limited Power Sources.

**DO NOT ATTEMPT TO OPEN OR TO DISASSEMBLE THE CHASSIS (ENCASING) OF THIS PRODUCT. PLEASE CONTACT YOUR NEAREST DEALER FOR SERVICING FROM QUALIFIED TECHNICIAN.**

# Regulatory

## FCC Class A Note

This equipment has been tested and found to comply with the limits for a Class A digital device, pursuant to Part 15 of the FCC Rules. These limits are designed to provide reasonable protection against harmful interference when the equipment is operated in a commercial environment. This equipment generates, uses and can radiate radio frequency energy and, if not installed and used in accordance with the instruction manual, may cause harmful interference in which case the user will be required to correct the interference at his own expense. Testing was done with shielded cables. Therefore, in order to comply with the FCC regulations, you must use shielded cables with your installation.

## WARNING

This product complies with EN55022 class A. In a domestic environment this product may cause radio interference in which case the user may be required to take adequate measures.

Changes or modifications to this unit not expressly approved by the party responsible for compliance could void the user's authority to operate the equipment.

This device complies with Part 15 of the FCC rules. Operation is subject to the following two conditions: (1) this device may not cause harmful interference, and (2) this device must accept any interference received, including interference that may cause undesired operation.

This digital apparatus does not exceed the Class A limits for radio noise emissions from digital apparatus as set out in the interference - causing equipment standard entitled "Digital Apparatus", ICES-003 of the Department of Communications.

## Manufacturer's Declaration of Conformity

This equipment has been tested and found to comply with the requirements of European Community Council Directives 89/336/EEC and 73/23/EEC relating to electromagnetic compatibility and product safety respectively.

## Attention

This product has been designed and certified to comply with certain regulatory requirements pertaining to Information Technology Equipment. This product has not been designed for use as a medical device. Without limitation of the foregoing, it is not intended and has not been certified for use in a hospital or clinical environment to diagnose, treat, or monitor patients under medical supervision, and is not intended and has not been certified to make physical or electrical contact with patients, nor to transfer energy to or from patients and/or to detect such energy transfer to or from patients.

# Purchase Agreement

## Purpose:

In accordance to the general commercial conduct of Trust and Fair Trade, herewith below is the agreement for the protection for both parties, DMP and Users in pursuant of trading.

## Product Description:

With this product, herewith also known as DIN PC-333x Series, which is a simplified & an economical design of an embedded device for Special Purpose Personal Computing. The basic specification of this product is comprised of the x86 technology design, and with onboard 1GB/ 2GB DDR2 System memory, VGA display, USB, and LAN Interfaces.

## Distribution Convention:

1. This Product includes a gift box, an inner case, a PC, and a pluggable Terminal Block. Upon receiving this product, kindly please refer to the User' Manual to check for the contents and appearance of this product; contact immediately your nearest dealer or DMP branch office if any defective or missing parts found. The supplier will not be responsible for any reported discrepancy there after the expiration period of 3-days from the received date.
2. In consideration of transportation and the cost of storage, the supplier provides to the distributors a warranty of 12-months. This warranty covers the failure caused by hardware breakdown (excluding hard drives), but does not cover the act of misuse and mishandling.
3. The supplier will not accept unknown post, therefore if you wish to repair or to return your goods – kindly please contact your nearest dealer to make your declaration, and at the same time, apply for an RMA number (RMA stands for Return Merchandise Authorization – please ask for RMA form and fill-up for authorization).
4. The freight for return goods for repair will follow the International customary practice and convention: Both parties are to pay for freight of one shipment each. The shipper is required to prepay the freight from the place of origin (This means that the returnee (user) covers the freight for return goods, while the Supplier covers the freight for goods after the repair).
5. Obsolete warranty is referred to as: (1) Expiration of warranty or (2) Damage due to misuse within warranty. The Supplier will be taken into consideration of the circumstances, to provide repair service with charges expense for obsolete warranty. This expense includes the cost of material and the cost of labor.

**Note:** If there are other particular issues not listed in the above conditions, both parties agree to follow the General Law of Commerce with fair and reasonable discussion in handling and resolving the argument.

# Contents

## Chapter 1

- 02 Unpacking Your DIN PC

## Chapter 2

- 05 DIN PC-333x Series Overview
- 07 System Specifications
- 08 Peripherals Connecting

## Chapter 3

- 10 BIOS Reconfiguring
- 12 ACPI setting
- 13 PXE Diskless boot setting
- 14 Install the Driver
- 16 Additional Information
- 17 Turn off the display function setting
- 18 Linux Installation Guide

## Chapter 4

- 28 Onboard Connectors Summary
- 29 Pin Assignments

## Chapter 5

- 32 Taking Care of Your DIN PC
- 34 Troubleshooting

## Chapter 6

- 37 Terms and Condition
- 37 Warranty
- 37 Service and Support
- 37 Return Merchandise Authorization (RMA) Policy
- 37 Shipping Policy

# ***Chapter 1***



# Unpacking Your DIN PC

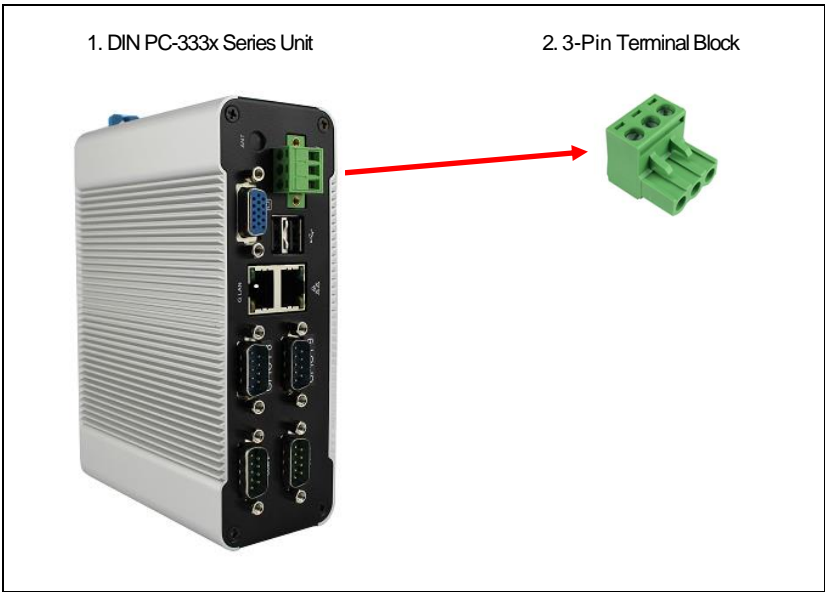
Congratulation! You have just acquired DIN PC-333x Series device, please check the following items:

## Packing List

Item No.	Description	Q'ty
1	DIN PC-333x Series DIN Rail Mountable PC	1x
2	3-Pin Plug-In Type Vertical Terminal Block	1x

**Note:** The accessories are subject to change without immediate notice.

## Check Before Use



## Preface

### DIN PC-333x Series DIN Rail Mounted Mini PC



The DIN PC-333x Series is an innovative device that provides a perfect balance between performance and energy efficiency. The DIN PC-333x is Fanless designed with wide operating temperature range of up to 50°C, making it suitable in warehouse and factory environments.

The DIN PC-333x Series features DMP ultra low power 933MHz Vortex86DX2 CPU, Onboard 1GB/ 2GB DDR2 RAM, two independent Ethernet, and various I/O ports. Supported operating systems such as Microsoft Windows Embedded and Linux OS, users can integrate applications easily with a platform that provides versatile functions to fulfill diverse requirements.

With compact dimensions of 152 x 104 x 54 mm (W x H x D), the DIN PC-333x Series fits in small control boxes, as well as directly in a machine or the machine stand. With DIN rail form factor, it supports DIN rail in top hat rail section EN 50022 version. All DIN PC-333x Series' interfaces are on the front side, so it can be cabled up easily. The DIN PC-333x Series is an ideal choice as the front end embedded controllers for industrial automation applications.

# ***Chapter 2***

# DIN PC-333x Series Overview



## Front Panel

### A: COM1 port

RS-232/ RS-422/ RS485 port

### B: COM2 port

RS-232/ RS-422/ RS485 port

### C & D: COM5 & COM6 port

RS-232 port x 2

### E & F: GPIO P8 & P9

8-bit GPIO port x 2

Available in DIN PC-333x Series GPIO Version

### G: RJ-45 LAN

10/100 Mbps

### H: RJ-45 G LAN

1 Gbps

### I: USB 2.0 port

Connection for external USB devices.

### J: Terminal Block Header

3-Pin pluggable type 5.00 mm Pitch

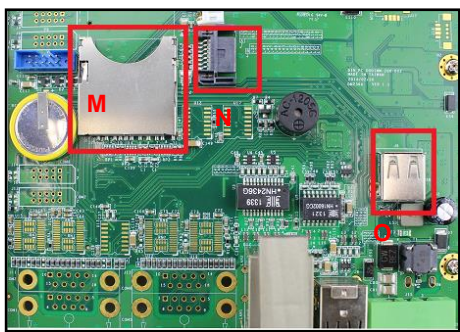
### K: VGA port

Integrated Graphics Chip/ D-Sub 15-Pin

## Rear Panel

### L: DIN Rail Mounting Clip

## Inside DIN PC-333x Series



### M: SD Card Slot

For the storage SD card, the system is bootable from SD Card

### N: 7-Pin SATA DOM Socket

Reserved for [SATA DOM](#)

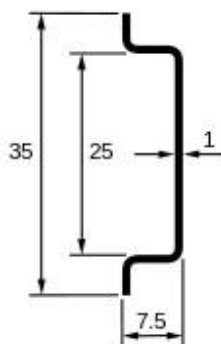
### O: USB 2.0 port

Reserve for [WLAN Dongle](#)



## DIN Rail Information

DIN PC-333x Series supports DIN rail in top hat rail section EN 50022 version. Please see dimension (mm) in picture shown below:



## System Specification

### CPU

Vortex86DX2 (933 MHz)

### Dimension & Weight

152 x 104 x 54mm/ 760g

### Main Memory

1GB DDR2

(32-bit DRAM bus, DIN PC-3330 Series)

### Supported Operating System

Windows 7 Home/ Pro.

Windows 7 Embedded

Windows XP Home/ Pro.

Windows XP Embedded

Windows Embedded CE

2GB DDR2

(32-bit DRAM bus, DIN PC-3332 Series)

Linux OS (click [Linux Support List](#) for details)

※ For Windows 7 users, DIN PC-333x Series supports 32-bit version only, 64-bit version does not support

### BIOS

AMI BIOS

### VGA

Resolution up to 1920 x 1440 pixels

### On-Board SATA

SATA 2.0 connector x1 (Internal)

### Peripheral

1. USB 2.0 x 3 (External x 2/ Internal x 1)
2. SD Card slot x 1 (Internal)
3. Serial port x 4 (available for listed models)

## Peripherals

## Connecting the Power Adaptor



### A: 3-Pin 5.00 mm Pitch Terminal Block

To use DIN PC-333x Series immediately, please attach the Plug-In type Terminal Block with power DC +8V ~ +24V

Note: DIN PC-333x Series supports Auto Power On function, when power & switch on, the system will be turned on automatically

## Connecting the Monitor



### B: VGA out Connection

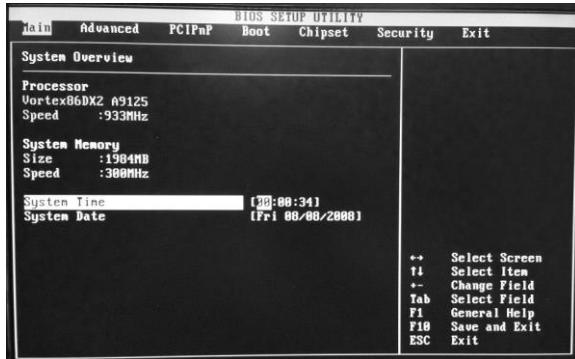
Connect your LCD display Monitor with a VGA cable (It is not included in DIN PC-333x Series console bundles) to the 15-pin D-Sub VGA port

# ***Chapter 3***



# BIOS Reconfiguring

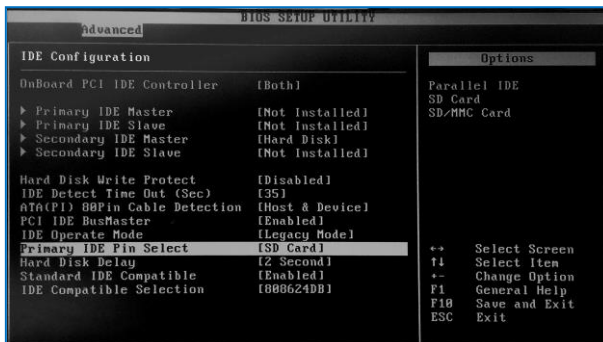
AMI BIOS is used in the DIN PC-333x Series. To reconfigure the BIOS, press <Del> key repeatedly to enter BIOS setup main menu as below:



Use ← and → keys to select screen; ↑ and ↓ keys to scroll the selected item. Press <ESC> return to previous screen and press <F9> if you want to load factory default setting. Following guide concentrated only those settings that may need to change.

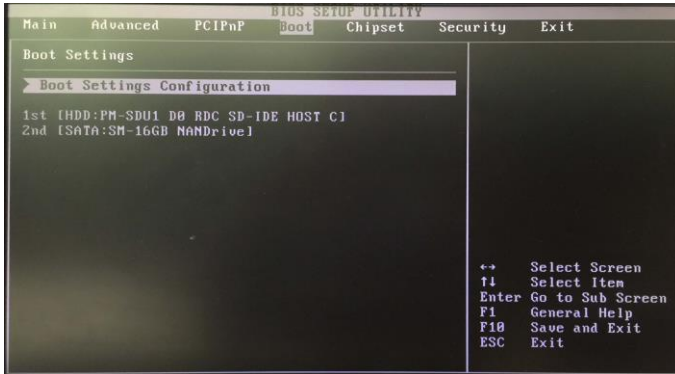
## Primary IDE Pin Select setting:

1. Boot up DIN PC unit and press <Del> to get into BIOS menu.
2. Move to **Advanced** "Primary IDE Pin Select":
  - Parallel IDE = use 2.5" SATA HDD or SATA DOM as main storage.
  - SD Card = use SD card as main storage.
3. Press <F10> to save the setting and exit.

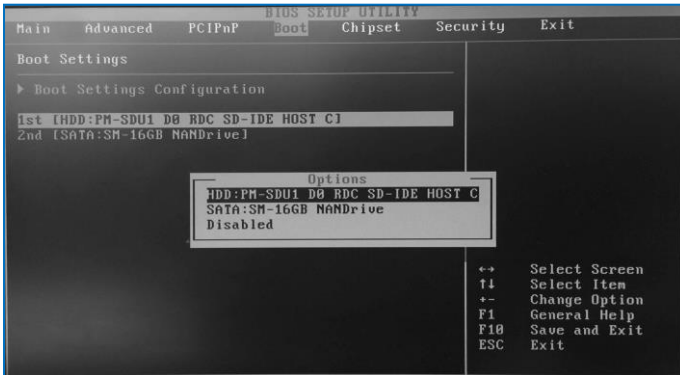


## Boot setting:

1. Boot up DIN PC unit and press <Del> to get into BIOS menu.
2. Move to **Boot** "Boot Settings Configuration" and press Enter.



3. set your main storage as 1<sup>st</sup> boot.



4. Press <F10> to save the setting and exit.

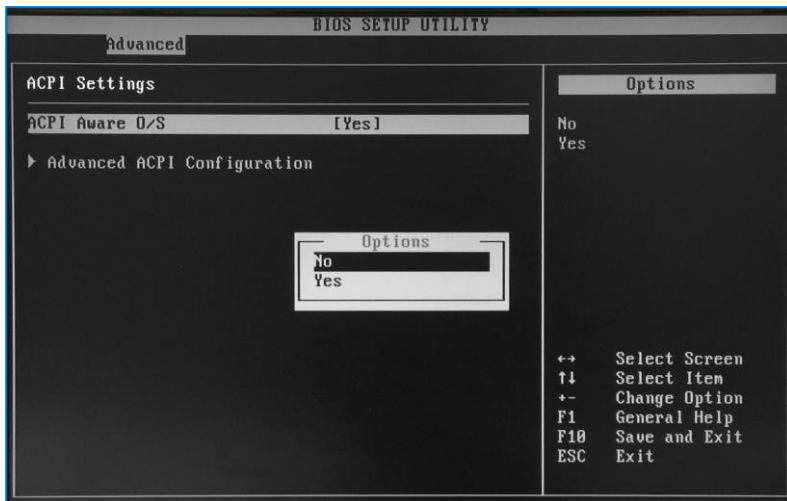
## ACPI setting:

For Windows XP or XPe OS users, please set ACPI Aware O/S to [No], steps as below:

1. Boot up DIN PC unit and press <Del> to get into BIOS menu.
2. Move to **Advanced** and select "ACPI configuration" then press ENTER.

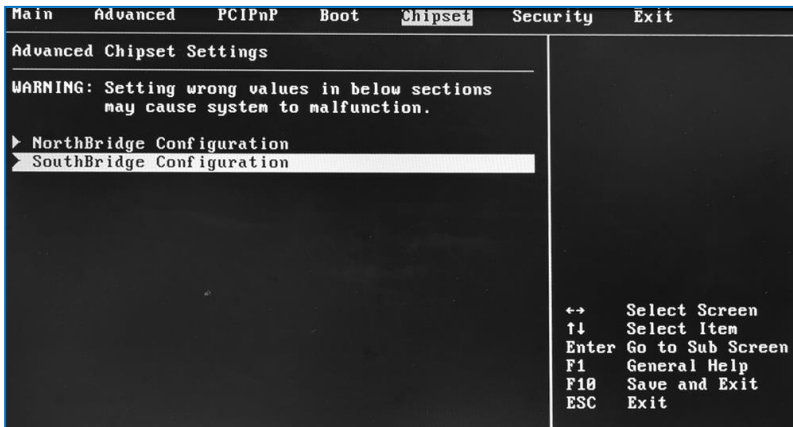


3. Press ENTER on "ACPI Aware O/S" and choose [No] in the pop out options, then press "F10" to save the setting and exit.

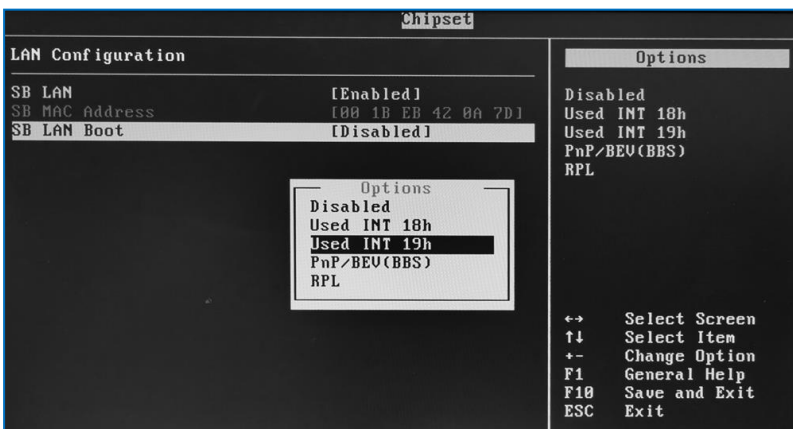


## PXE Diskless boot setting:

1. Boot up DIN PC unit and press <Del> to get into BIOS menu.
2. Move to **Chipset** then select "SouthBridge Configuration" and press ENTER.



3. Move to "LAN Configuration" and enter "SB LAN Boot" to choose "Used INT 19h".



4. Press "F10" to save the setting and exit.

# INSTALL THE DRIVER:

Under the Windows Series OS, the following drivers need to be installed manually:

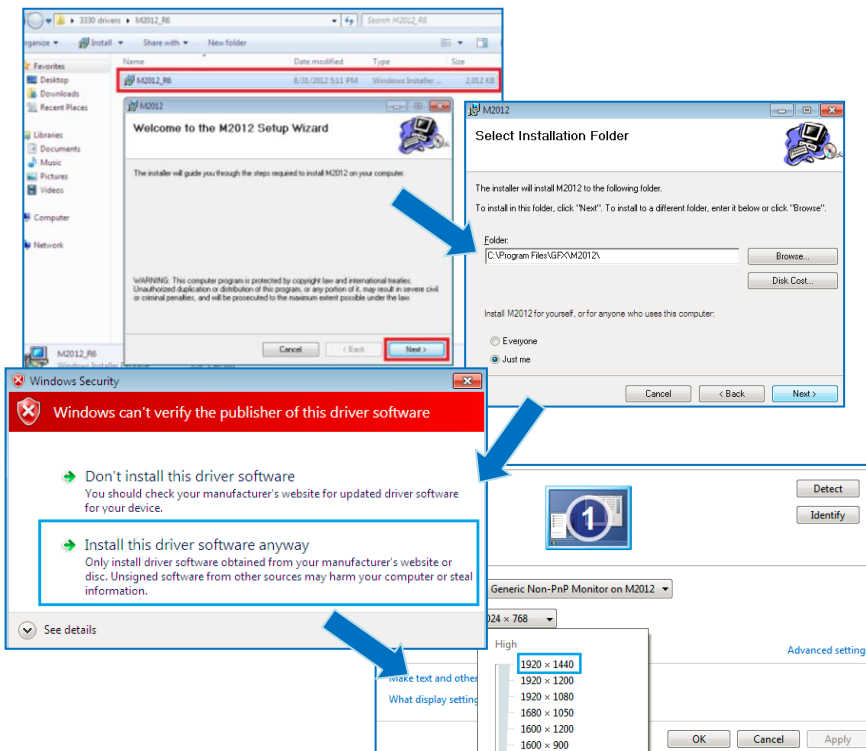
1. VGA driver
2. Ethernet driver
3. Wireless LAN Dongle driver (Optional)

## Note:

Please find the mating drivers from [EBOX support page](#)

## VGA DRIVER:

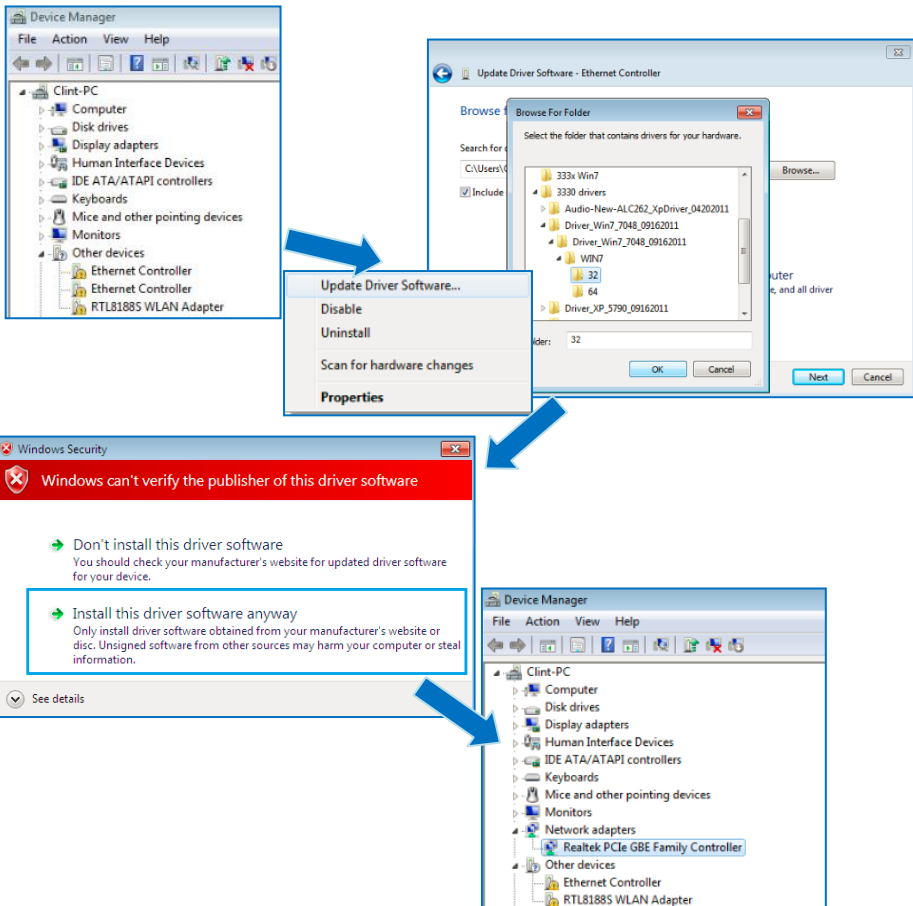
Unzip the downloaded file and double click the setting .exe file, then “Next” as below to install:



After VGA driver installation completed, you will have to restart the computer. Then you will be able to select the resolution up to 1920 x 1440 pixels.

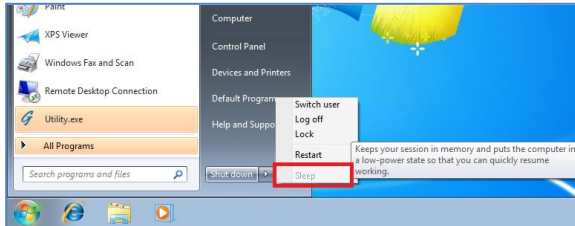
## ETHERNET DRIVER:

1. Find the yellow question mark of Ethernet in the Device Manager under the control panel/system.
2. On 1<sup>st</sup> question mark update with 10/ 100M LAN driver, right click and select "Update Driver Software" choose the right path, then click "Install this driver software anyway" when Windows Security pops out.
3. After installation completed, the Device Manager will update and show the correct device.
4. Following the procedure above, update 2<sup>nd</sup> question mark with 1G LAN driver.
5. Following the procedure above, update 3<sup>rd</sup> question mark with WLAN dongle driver (optional).

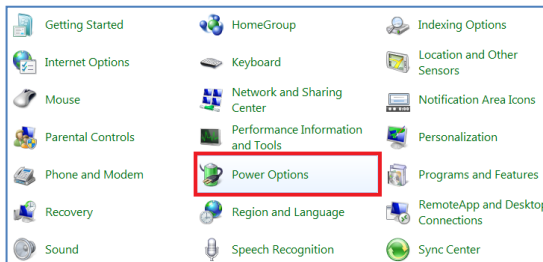


## Additional information:

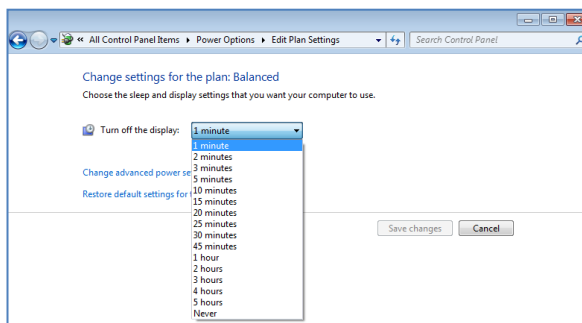
For Windows 7 OS or Windows 7 Embedded OS, the sleep function is hidden if you selected from the start menu.



To customize the settings, first go to **Start > Control Panel > Power Options**, or simply search for "**Power Options**" (without quotes). You will see a list of different power plans on your computer.

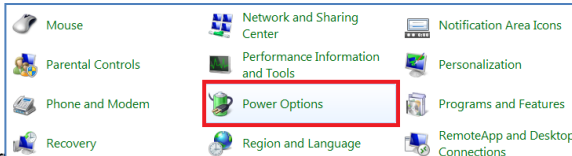


The plan currently in use has a blue dot in front of it. Click "**Change Plan Settings**" next to the power plan currently in use. Click on the drop-down menu list, that is exactly next to "Put the Computer to sleep:". From the options, you can set the amount of idle time before entering sleep mode.

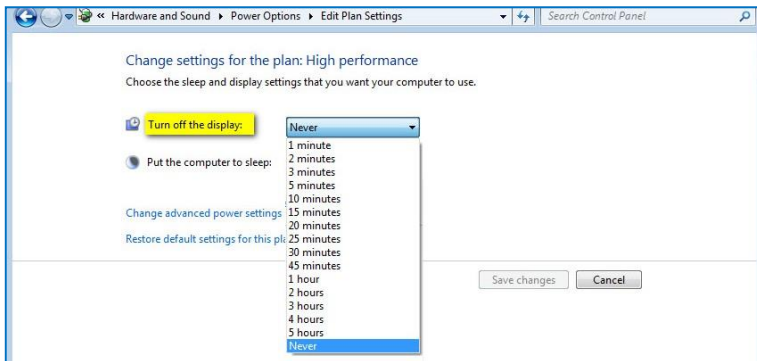


## Turn off the display function setting:

For Windows 7 or Windows 7 Embedded OS users, click **Start Menu > Control Panel > Power Options**, or simply search for **"Power Options"** (without quotes). You will see a list of different power plans.

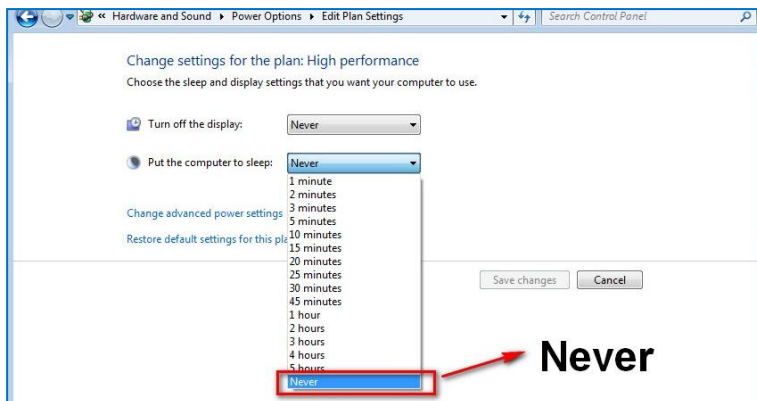


The plan currently in use has a blue down arrow. Click **Change Plan Settings** next to the power plan currently in use. Click on the drop-down menu list, that is exactly next to "Turn off the display". From the options, you can set the amount of idle time.



**DIN PC-333x Series does not support sleep function, it cannot wake up after sleep.**

To avoid the unwakeable sleep, please disable the function by setting "Put the computer to sleep" to "Never".





# Linux installation For Debian7.0/ Ubuntu10.04

Regarding the system installation of Debian7.0/Ubuntu10.04, please follow the steps and suggestions to complete the system installation on the DIN PC-333x Series platform. The following is a brief instruction, users may configure it according to their specific needs.

## 1. Configuration of BIOS

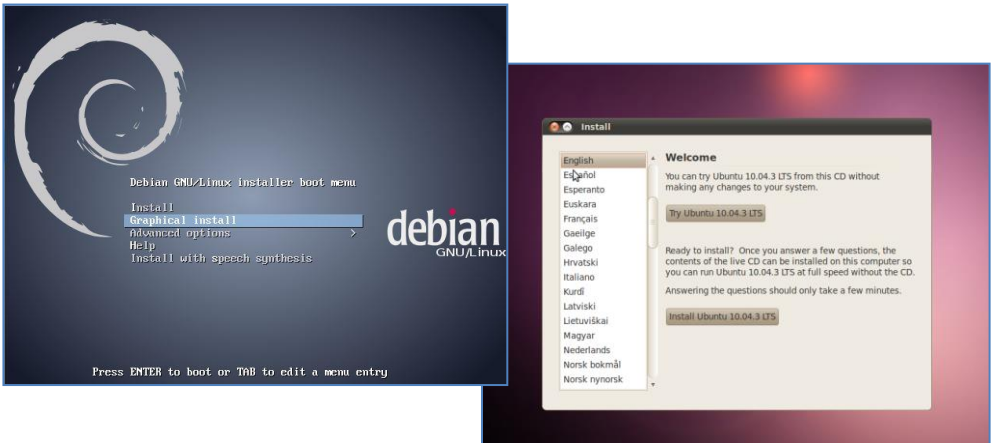
- The first step is to ensure BIOS has correctly configured that necessary function was enabled for IDE device. (for Debian7.0 especially)



- Keep pressing the key <Del> can assist entering BIOS when the power turned on. The BIOS functions you need to check locate Advanced \ IDE Configuration \ Standard IDE Compatible. Set as Enabled.

## 2. Basic system installation

- For Debian7.0, after booting from the installation CD, moving straight to install system would get a text mode system only, please choose Graphic Install for Graphical User Interface OS installation.



- Set basic configuration such as language, keyboard map and time zone, etc. steps by steps.
- Then the system will detect the network hardware, and requires users to load the firmware files for network device rtl8168, just answer no for this inquiry and move forward.
- Next the system will detect multiple network interfaces on the DIN PC-333x Series, and users have to decide the primary network interface, both of them could be chosen. Note: the Ethernet cable must be plugged in during this period.

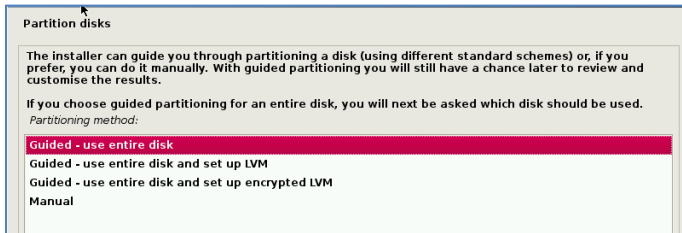
### Configure the network

Please enter the hostname for this system.

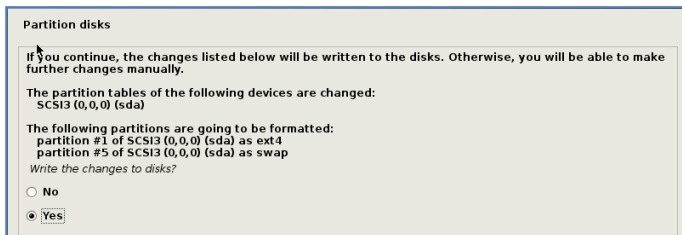
The hostname is a single word that identifies your system to the network. If you don't know what your hostname should be, consult your network administrator. If you are setting up your own home network, you can make something up here.

Hostname:

- During the installation process, the system would ask users to create partitions for the operating system. Following example is using entire disk for the beginner. Choose "Guided - use entire disk".



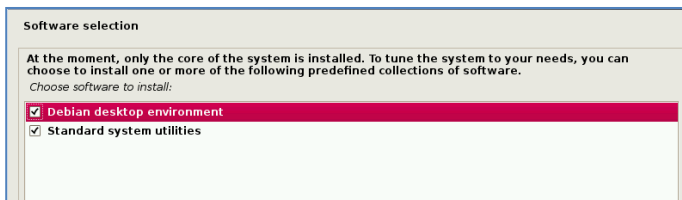
- Select "Yes" to create the partition.



- Then the system would keep popping out questions for configuration, suggestions as below:

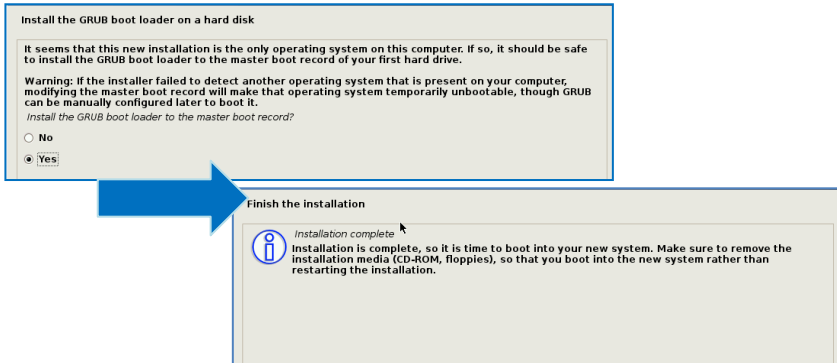
### For Software selection:

Please remark both the Debian desktop environment and standard system utilities, then click to continue. It would start the package installation, and around hundred packages would be installed, after installation completed, the next indication message would pop up.



**For Install the GRUB boot loader on a hard disk:**

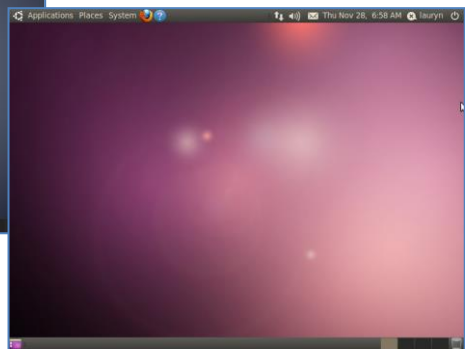
Answer YES to complete the installation as last procedure.



- When it's completed, the disc tray will eject and inform you, then press continue to restart and be ready to enjoy the new system!



The Debian7.0

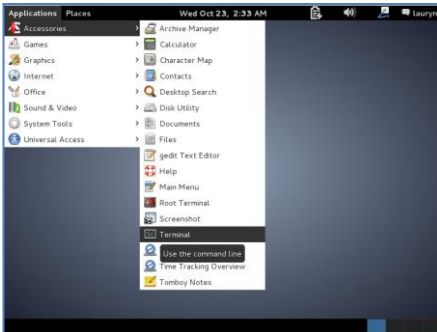


The Ubuntu10.04

### 3. Kernel and graphic driver installation

Install the Kernel Package (Console mode)

- For Debian7.0, you can skip this procedure for kernel installation; Because system could work with default kernel version (3.2.0).
- Clicking the icon of the terminal from the application. And download the kernel 2.6.32-21 from below link then to store the kernel package.

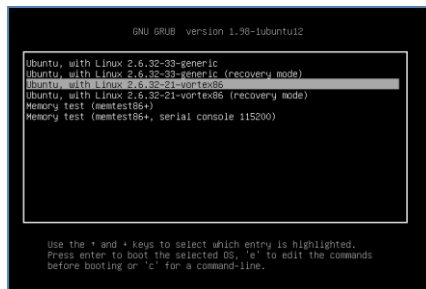


- Follow the instructions to complete the kernel installation, get into the folder that kernel file stored, and switching as the root before command executed.

```
# dpkg -i linux-image-2.6.32-21-vortex86_2.6.32-21.32_i386.deb
```

Kernel Package (click [2.6.32-21-Vortex86](#))

- When download completed, restart the system and to choose the kernel 2.6.34.10 to boot when GRUB boot loader was loaded. You can keep pressing the key "Shift" when the system from booting, then the boot loader would show the option of kernel for you. Then find the "Ubuntu, With Linux 2.6.32-21-vortex86" to execute.



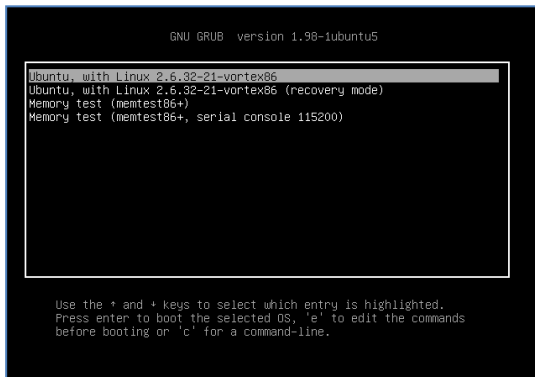
- Or you can remove the default kernel 2.6.32-??-generic that be arranged as a higher priority than the kernel we installed for the DIN PC-333x platform, with the instruction below through the terminal.
- First, check what version be installed as default in the system:

```
# grep -w linux-image-2.6.32 /var/log/dpkg.log
```

- To find the last two numbers as location of question marks that the system shows on screen "linux-image-2.6.32-??"
- Then execute it with the correct numbers that you found in previous, and to replace the question mark with correct version numbers shown below.

```
# apt-get remove linux-image-2.6.32-??-generic
```

- Then you would see only one kernel on the GRUB list.



## Install the VGA driver (Console mode)

- Switch to console mode by pressing key <Ctrl> + <Alt> + <F1>, then copy the VGA driver rdc\_drv.so to the driver folder /usr/lib/xor/modules/drivers/, before that, you can download the driver from links below for Debian7 and Ubuntu10.04 individually.

The Ubuntu10.04 Xorg Version is **1.7.6**

The Debian 7.0 Xorg Version is **1.12.4**

VGA Driver (click [M2012\\_R0.04](#) to download) for Ubuntu 10.04

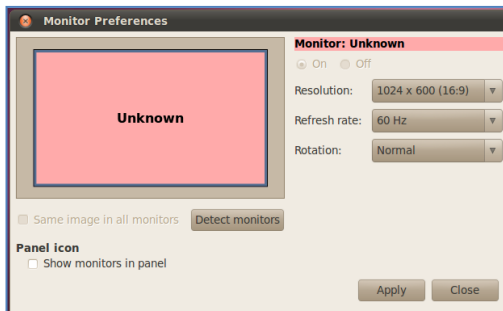
VGA Driver (click [M2012\\_T0.0.9.1](#) to download) for Debian 7.0

- Follow instruction below to execute.

```
#/etc/init.d/gdm stop
#X -configure
#cp /root/xorg.conf.new /etc/X11/xorg.conf
#/etc/init.d/gdm restart
```

※Please click [xorg.conf](#) to download for your system, if the display is out of range.

- Reboot and make sure all the display is normal then set the resolution as requested.



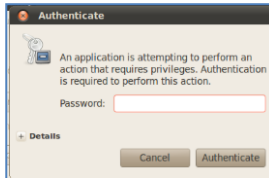
The supported resolutions:

1920x1200 (16:10)	1400x960	1280x768 (16:10)
1920x1080 (16:9)	1280x1024 (5:4)	1280x720 (16:9)
1600x1200 (4:3)	1440x900 (16:10)	1024x768 (4:3)
1680x1050 (16:10)	1280x960 (4:3)	800x600 (4:3)
1400x1050 (4:3)	1366x768 (16:9)	640x480 (4:3)
1440x960 (3:2)	1360x768 (16:9)	

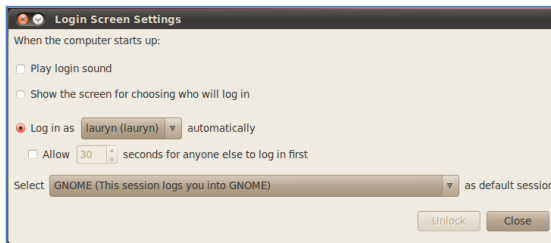
## 4. The system configuration

### Enable the Auto login System / Administration / Login Screen

Execute the utility “Login Screen” and enter the password to process it.

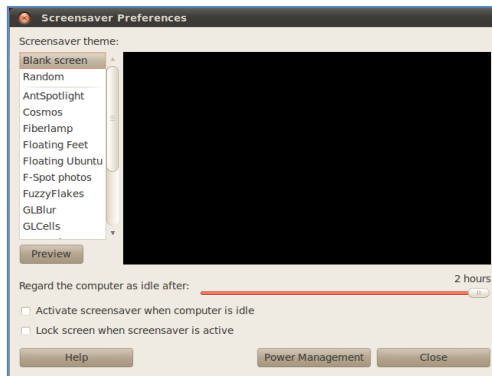


Set the Log in as “user account” automatically.



### Disable the power saving mode when system idle, System / Preference / Screensaver

Unmarked the option “Active the screensaver when computer is idle”.

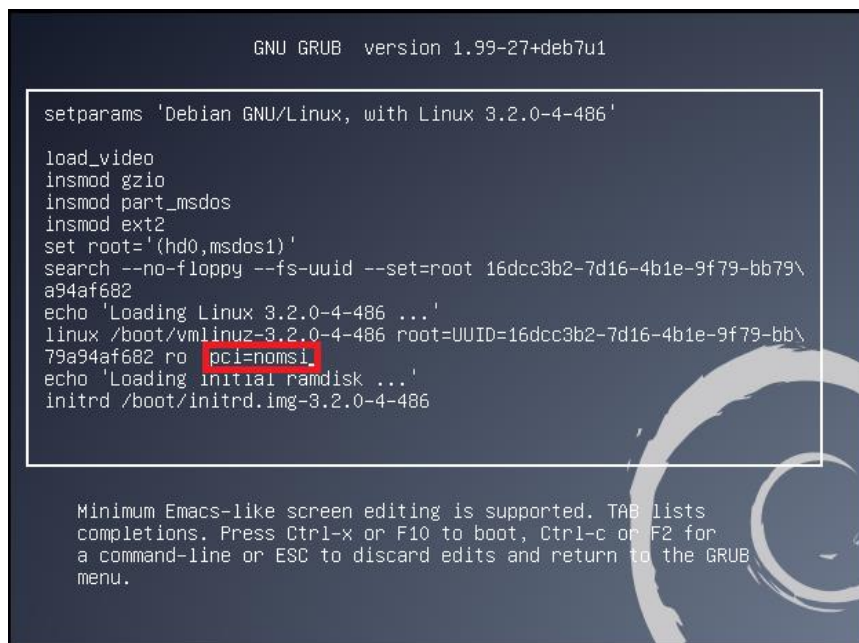


Now, it is a workable Linux system for your DIN PC-333x Series.



## 5. Setting adjustment for Gigabit LAN device (RTL-8111/8168 for Debian 7.0 system only).

- To add the parameters "pci=noms" in the line of Linux of GRUB as figure as below. The MSI/MSI-X must disabled for application of Gigabit LAN (RTL-8111/8168) on the DIN PC-333x Series, and it could be set permanent by edition of file /boot/grub/grub.cfg.



```
GNU GRUB version 1.99-27+deb7u1

setparams 'Debian GNU/Linux, with Linux 3.2.0-4-486'

load_video
insmod gzio
insmod part_msdos
insmod ext2
set root='(hd0,msdos1)'
search --no-floppy --fs-uuid --set=root 16dcc3b2-7d16-4b1e-9f79-bb79\
a94af682
echo 'Loading Linux 3.2.0-4-486 ...'
linux /boot/vmlinuz-3.2.0-4-486 root=UUID=16dcc3b2-7d16-4b1e-9f79-bb\
79a94af682 ro pci=noms
echo 'Loading initial ramdisk ...'
initrd /boot/initrd.img-3.2.0-4-486

Minimum Emacs-like screen editing is supported. TAB lists
completions. Press Ctrl-x or F10 to boot, Ctrl-c or F2 for
a command-line or ESC to discard edits and return to the GRUB
menu.
```

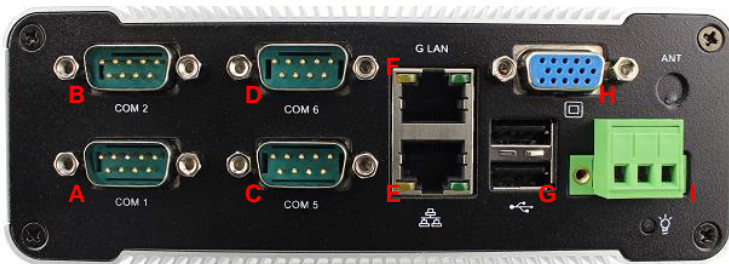
# ***Chapter4***

## Onboard Connectors Summary

**Summary Table for CPU Board**

Nbr	Description	Type of Connections	Pin nbrs.
J2	SD Card Slot (Inside)	SD Card Slot	9-pin
J3	SATA (Inside)	SATA Socket	7-pin
J5	USB3 (Inside)	USB connector	4-pin
J6	USB1	USB connector	4-pin
J6	USB2	USB connector	4-pin
J7	GPIO P8	Box Header 5 x 2 2.0mm	9-pin
J8	VGA port	D-Sub connector	15-pin
J9	GPIO P9	Box Header 5 x 2 2.0mm	9-pin
J10	Ethernet LAN	RJ-45	8-pin
J10	Ethernet LAN	G-LAN, RJ-45	8-pin
J11	COM1 port	Box Header 5 x 2 2.0mm	9-pin
J11	COM2 port	Box Header 5 x 2 2.0mm	9-pin
J13	COM5 port	Box Header 5 x 2 2.0mm	9-pin
J13	COM6 port	Box Header 5 x 2 2.0mm	9-pin
J15	Terminal Block	Terminal Block Socket	3-pin

### ► Front Connectors Outline



**A: COM1 port**

**B: COM2 port**

**C: COM5/ GPIO P9**

**D: COM6/ GPIO P8**

**E: RJ-45 LAN, 10/100 Mbps**

**F: RJ-45 LAN, 1 Gbps**

**G: USB 2.0**

**H: VGA port**

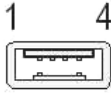
**I : Terminal Block Header**

# Pin Assignment

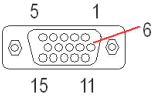
J15: 3-Pin Terminal Block Header

	Pin #	Signal Name
	1	+
	2	-
	FG	GND

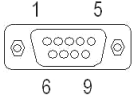
J5: USB 2.0 – 4-Pin USB Type connector (Internal)

	Pin #	Signal Name
	1	VCC
	2	Data -
	3	Data +
	4	GND

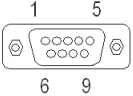
J8: VGA – 15pin D-Sub connector

	Pin #	Signal Name	Pin #	Signal Name	Pin #	Signal Name
	1	MR	6	GND	11	NC
	2	MG	7	GND	12	VCC
	3	MB	8	GND	13	HYSYNC
	4	NC	9	NC	14	VSYNC
	5	GND	10	GND	15	VCC

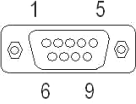
J7 : GPIO P8 - 9pin D-Sub connector (available in GPIO version)

	Pin #	Signal Name	Pin #	Signal Name
	1	PORT 80	2	PORT 84
	3	PORT 81	4	PORT 85
	5	GND	6	PORT 86
	7	PORT 82	8	PORT 87
	9	PORT 83	--	--

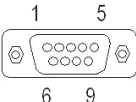
J9 : GPIO P9 - 9pin D-Sub connector (available in GPIO version)

	Pin #	Signal Name	Pin #	Signal Name
	1	PORT 90	2	PORT 94
	3	PORT 91	4	PORT 95
	5	GND	6	PORT 96
	7	PORT 92	8	PORT 97
	9	PORT 93	--	--

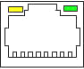
**J11 : COM 1 & COM 2 - 9pin D-Sub connector (RS-232/ RS-422/ RS-485)**

	Pin #	Signal Name	Pin #	Signal Name
	1	DCD/ 422TX-/ RS485-	2	RXD/ 422TX+/ RS485+
	3	TXD/ 422RX+	4	DTR/ 422RX-
	5	GND	6	DSR
	7	RTS	8	CTS
	9	RI	--	--

**J13 : COM 5 & COM 6 - 9pin D-Sub connector (RS-232)**

	Pin #	Signal Name	Pin #	Signal Name
	1	DCD	2	RXD
	3	TXD	4	DTR
	5	GND	6	DSR
	7	RTS	8	CTS
	9	RI	--	--

**J10: LAN: RJ-45 connector**

	Pin #	Signal Name	Pin #	Signal Name
	1	FTXD+	2	FTXD-
	3	FRXIN+	4	NC
	5	NC	6	FRXIN-
	7	NC	8	NC

# ***Chapter 5***

# Taking Care of your DIN PC

This section gives you some guidelines on using DIN PC: Safe using, Storing and Handling.

## Storing

- ▶ Do not place DIN PC-333x Series in a location that is subject to:
  - Heating sources, such as stove, oven, heater, radiator or air duct
  - Direct contact from sunlight
  - Rain or moisture area
  - Excessive dust accumulation area
  - High humidity place
  - Constant or occasional mechanical movement, vibration or shock
  - Strong magnets or magnetic fields or magnetically unshielded speakers
  - Out of the operating temperature range from 5°C to 50°C
- ▶ Do not place other electronic/ electrical equipments near DIN PC-333x Series. The electromagnetic field of DIN PC-333x Series may cause interference subjecting to malfunction.
- ▶ Provide adequate air ventilation (circulation) to prevent internal buildup of heat. Leave a space of at least 8 inches (20cm) behind the sides and back panel of the DIN PC-333x Series.
- ▶ Change of environmental temperature: Problems may occur when there is a sudden change of environmental temperature, or if the DIN PC-333x Series is brought directly from a cold location to a warm one, moisture may condense inside DIN PC-333x Series. Turn off the device, and contact your nearest dealer.
- ▶ Check the surrounding appliance(s) before using DIN PC-333x Series. Since the DIN PC-333x Series uses high-frequency radio signal and may interface with radio or TV reception causing interference or poor signal display. When this happens, relocate the DIN PC-333x Series by a suitable distance away from the set.
- ▶ Do not drop the DIN PC-333x Series from the working table nor place heavy objects on top of it.

## **Cleaning Your DIN PC**

- ▶ Clean DIN PC with a soft, dry cloth or a soft cloth lightly moistened with a mild detergent solution.
- ▶ Do not use any type of abrasive pad, scouring powder, or solvent such as alcohol or benzene, as these may damage the finish of DIN PC.
- ▶ When a solid object falls or a liquid spills onto the DIN PC, turn off the DIN PC immediately and unplug the LAN and power cables. Contact a qualified person or your dealer to check the DIN PC before you use it again.
- ▶ Always disconnect the power cord from the power source before cleaning the DIN PC.



# Troubleshooting

This section describes the techniques of resolving some basic problems that you encounter when using DIN PC-333x Series. For more troubleshooting guidelines, please contact your nearest dealer for technical support.

## Troubleshooting Your DIN PC

### A. DIN PC does not start

- ▶ Make sure the DIN PC-333x Series is properly secured and plugged into a power source. Make sure the power indicator shows the power is on. See section 2 for more information about "DIN PC-333x Series Overview".
- ▶ Ensure that power connection of the DIN PC-333x Series to the external power source are plugged in properly.
- ▶ Check if your VGA or LCD monitor is properly plugged into a power source and turned on. Make sure the brightness and contrast controls are adjusted correctly. See the manual that came with your display (monitor) for details.
- ▶ Test the outlet by connecting a different electronic device to the outlet.
- ▶ Check if the DIN PC-333x Series does not function, by removing the power connection. Wait for one minute, and then reattach the power connection.
- ▶ Condensation may cause the DIN PC-333x Series to malfunction for a while. If this happens, do not use the DIN PC-333x Series for at least one hour.
- ▶ When you have checked all the above guidelines and the DIN PC-333x Series does not work. Remove the power connection from the DIN PC-333x Series, and plug it in again. Then the device should be powered on automatically.

### B. BIOS Error Message –

#### BIOS error message appears when my DIN PC starts

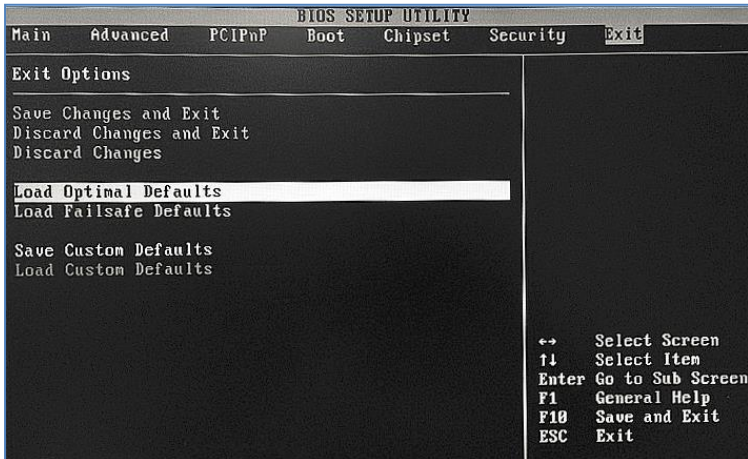
If the BIOS error message appears, press any key to resume or, hit <DEL> to enter the BIOS setup main menu, follow these steps:

1. Press <DEL>, and the BIOS Setup main menu appears, check if HDD is detected. If it is not detected, use Direction keys <↑↓> to choose "AUTO" and then go back to the main menu by pressing <ESC>. Move your cursor down with Direction keys <↓>, and choose "Save Settings and Exit", a message dialog appears as seen below, hit <Enter>.

"Save current settings and exit (Y/N)? Y"

2. Go to "Exit" menu using the Direction keys <↑↓> and choose the option "Load Optimal Defaults", then press <Enter>. A message dialog appears as seen below, hit "Y" key and presses <Enter> to save and recover to the factory setting.

"Load Optimal Defaults (Y/N)? Y"



(BIOS Setup menu "Exit")

## C. "Operating System Not Found" –

**A message indicating that "Operating system not found" appear when the DIN PC starts (Windows won't start)**

- ▶ Enter the BIOS setup main menu by pressing <DEL> key, be sure if correct boot drive is enabled.
- ▶ If Windows still does not start, follow these steps to initialize the BIOS:
  1. Turn off the DIN PC-333x Series.
  2. Remove any peripheral devices connected to the DIN PC-333x Series.
  3. Restart the DIN PC-333x Series.
  4. Press <DEL> to enter **BIOS Setup main menu** window.
  5. Follow the steps as written in item **B. BIOS** error message.
- ▶ If you have just connected DIN PC-333x Series to a CD/ DVD or USB Drivers, remove these peripherals. And restart to confirm that the Windows operating system starts properly. If DIN PC-333x Series continues to display the message "Operating system not found," and Windows does not start, please contact your nearest dealer for servicing.

# ***Chapter 6***

# Terms and Conditions

## Warranty

The warranty terms for DIN PC-333x Series are twelve (12) months from the shipped month. During the warranty period, DMP Electronics will repair/ replace the product covered under this limited warranty.

## Service and Support

DMP Electronics Inc. provides the technical support for hardware problems with your system throughout the warranty period. The technical support service is limited to configuration and operation of DIN PC-333x Series sold by DMP Electronics Inc. The technical support service does not offer software tutoring or training.

## Return Merchandise Authorization (RMA) policy

If the DMP staff or dealer determines that a part is defective. Purchaser must call our technical support service to obtain an RMA number before attempting to return any part. Please refer to your nearest dealer for :

To obtain an RMA number, Purchaser must follow procedures as below:

1. Complete the DMP Electronics Inc. standard RMA Form and fax back to the RMA Department.
2. The RMA Number must be used within 7 DAYS.
3. The RMA Number must be shown clearly on your shipping label.
4. DMP Electronics Inc. must receive all Returns before a replacement will be sent.
5. The repair cost depends on the parts, the damage reasons, and whether under warranty period, etc.  
The Seller will charge the Purchaser in a reasonable price.
6. A copy of the invoice for the RMA product(s) will also be shipped to Purchaser.
7. The freight of return to DMP Electronics Inc. is charged to the Purchaser's account and accompanied by an RMA number. Any Returns with freight collect will be refused and returned to you. After Repairing, the cost of freight will be paid by Seller.
8. DMP Electronics Inc. must receive all returned goods within the warranty period.

## Shipping Policy

The Purchaser must pre-pay shipping for any defective system or parts returned under the warranty. DMP Electronics Inc. shall not be liable for risk of loss or damage during shipment of your returned system or parts if you fail to insure the shipment.

All products must be shipped back to DMP Electronics Inc. in original or equivalent packaging. DMP Electronics Inc. will ship the repaired or replacement product(s) to the Purchaser by freight prepaid. Purchaser assumes the risk of loss. DMP Electronics Inc. shall not be responsible for failure of the delivery service to make on-time delivery.